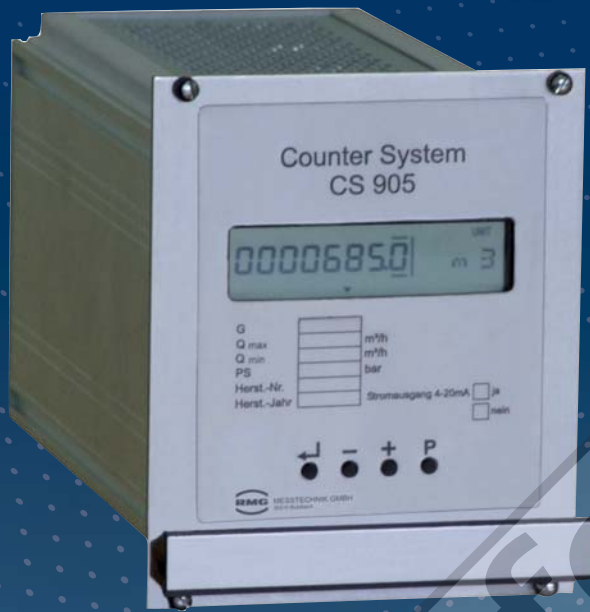


# Counter System CS 905



## PRODUCT INFORMATION

**Serving the Gas Industry  
Worldwide**



## COUNTER SYSTEM CS 905

### Brief description

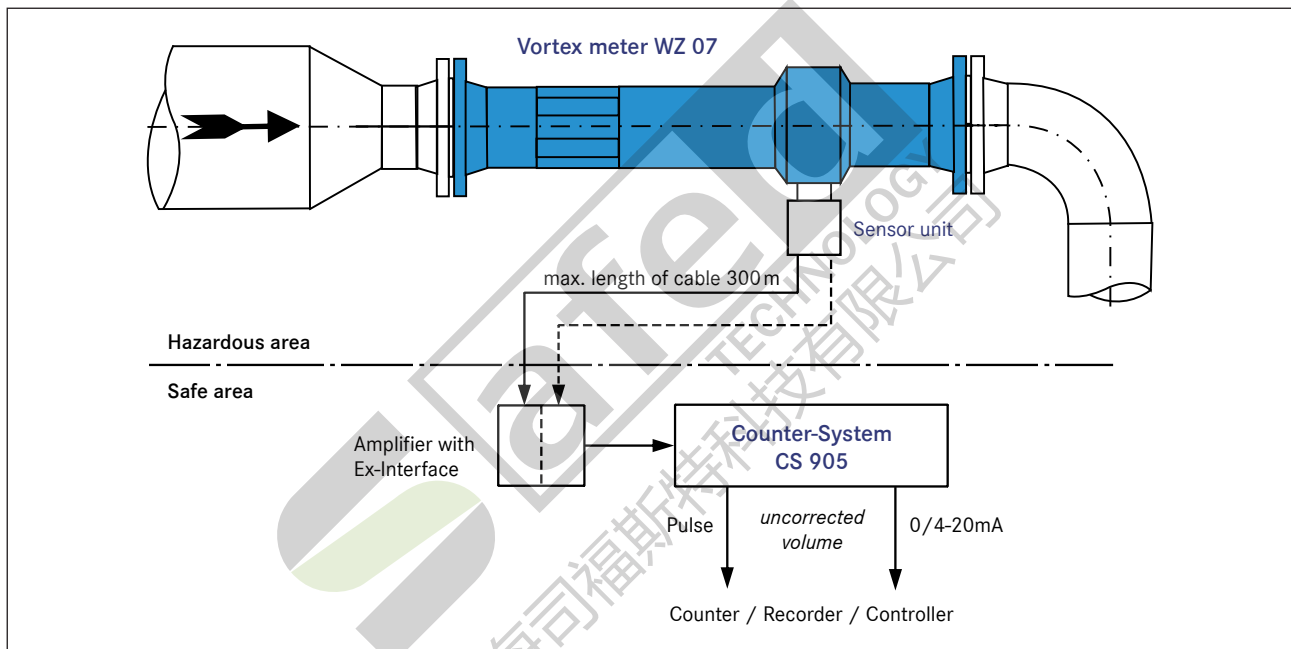
The CS 905 Counter System counts the electrical pulses received from gas meters or liquid meters from which it calculates the volume that flowed through the meter. It is particularly suitable for meters without integrated totalizers (e.g. vortex meters). Furthermore the CS 905 can be used for remote totalizing so that readings must not be taken directly at the meter.

The CS 905 is a variant of the electronic counter head of the RMG turbine meter TERZ 94.

### Features

- Flow display
- 3 totalizers (main totalizer, start-stop totalizer, resettable totalizer)
- Option for switching off by external switching contact
- Programmable meter factor and output pulse value
- Current output (0/4 to 20 mA) proportional to the rate of flow

### Application example



Specifications	
Voltage supply	24 V/DC $\pm$ 10%
base bord	Euroformat card 160 mm x 100 mm as 19" plug-in unit
Dimensions (front panel):	Height 3U x Width 21U (128.7 mm x 106.0 mm)
Pulse inputs	Non-Ex input: open collector
Max. input frequency:	500 Hz (at a mark-to-space ratio of 1:1)
Pulse outputs	LF output (max. 4 Hz) HF output (max. 500 Hz)